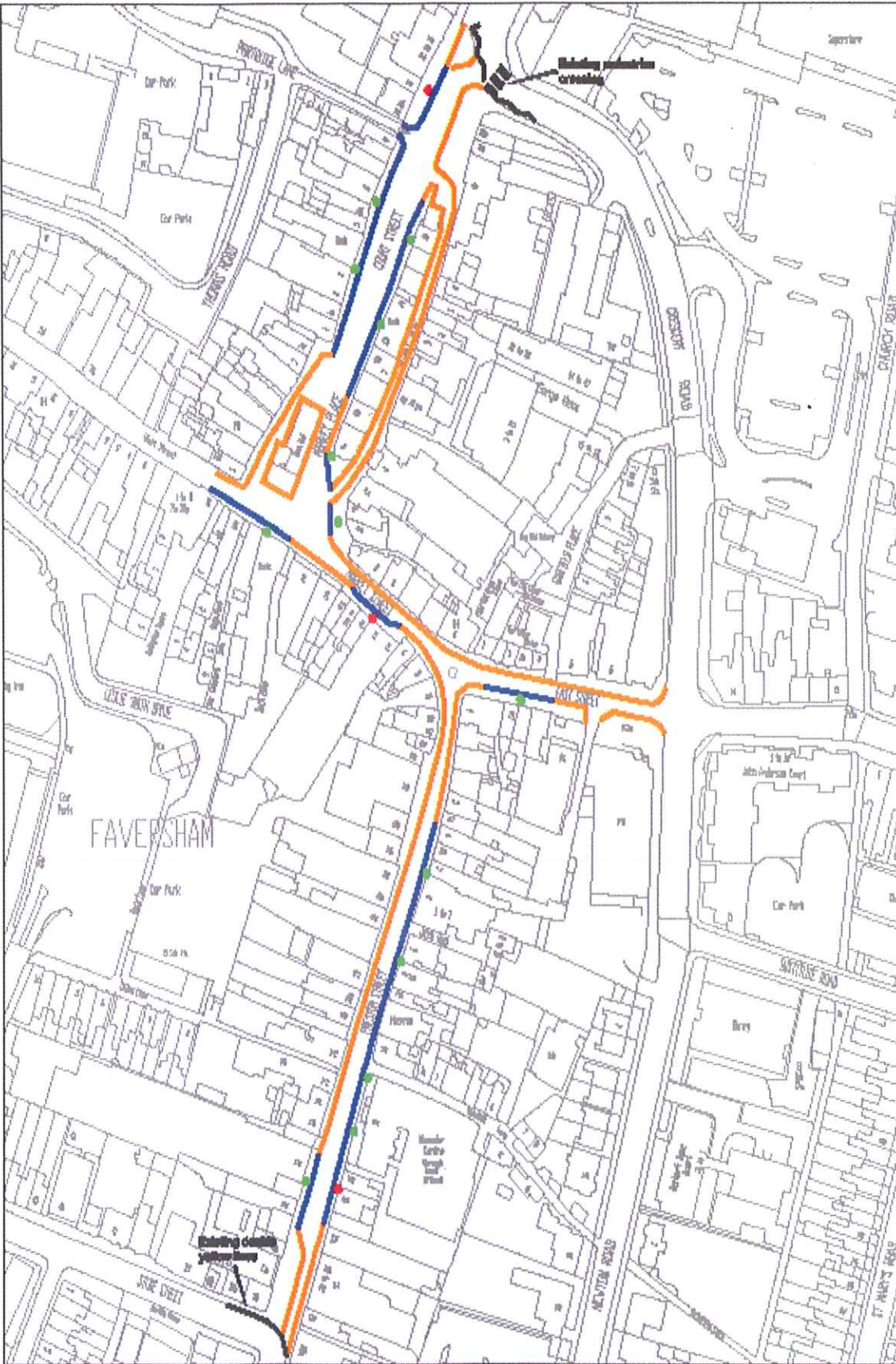
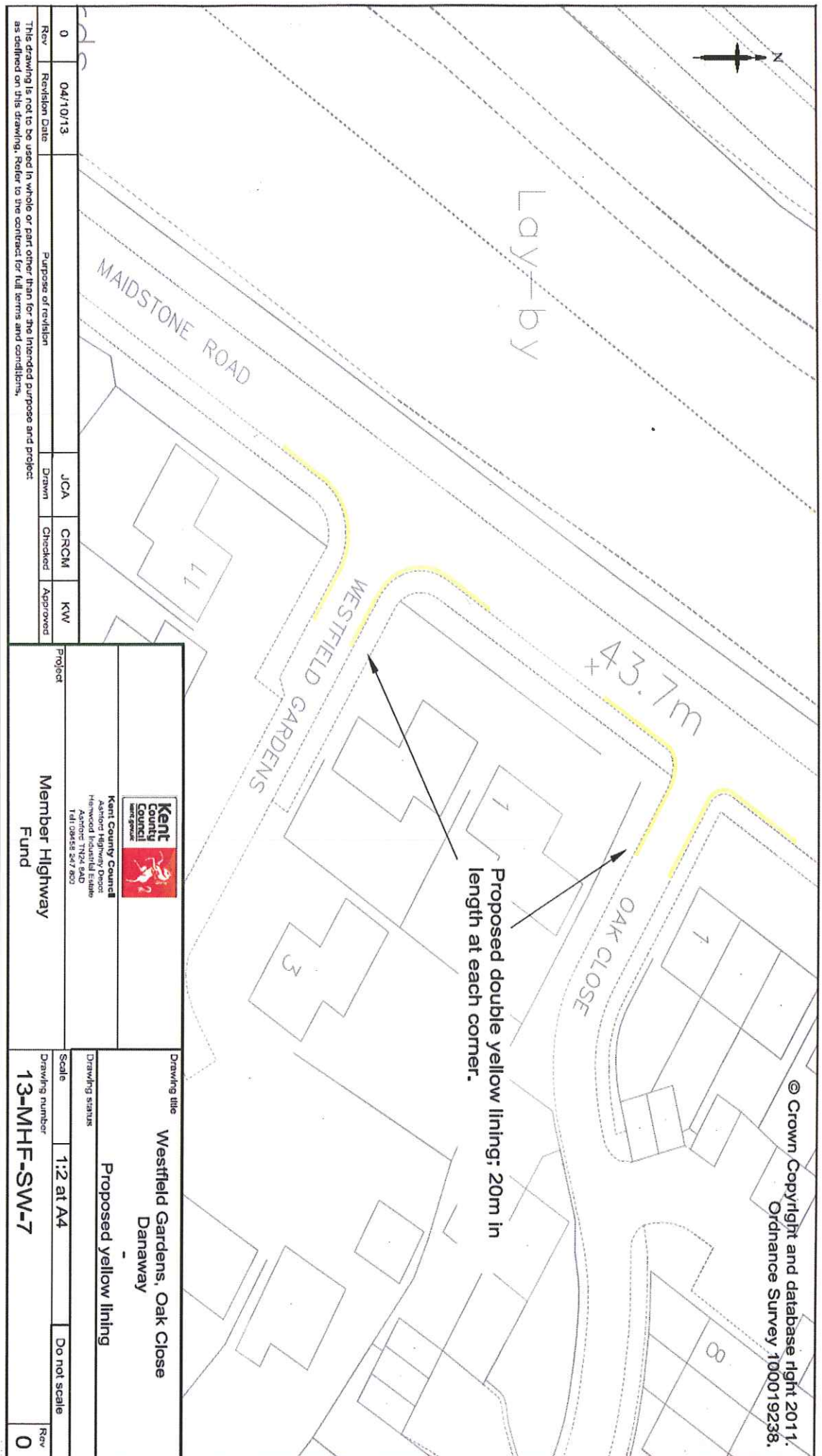


**Faversham Town Centre – Proposed Double And Single Yellow Lines**

**ANNEX B**



Title	Scale	Key
Proposed Restrictions Faversham Town Centre	N.T.B	<ul style="list-style-type: none"> <li><span style="color: orange;">—</span> Double Yellow Lines</li> <li><span style="color: blue;">—</span> Single Yellow Lines (no parking 9am - 6pm Mon - Sun)</li> <li><span style="color: red;">●</span> Sign on new post</li> <li><span style="color: green;">●</span> Sign on lamp column</li> </ul>



Rev	Revision Date	Drawn	Checked	Approved
0	04/10/13	JCA	CRCM	KW

Project  
Member Highway Fund

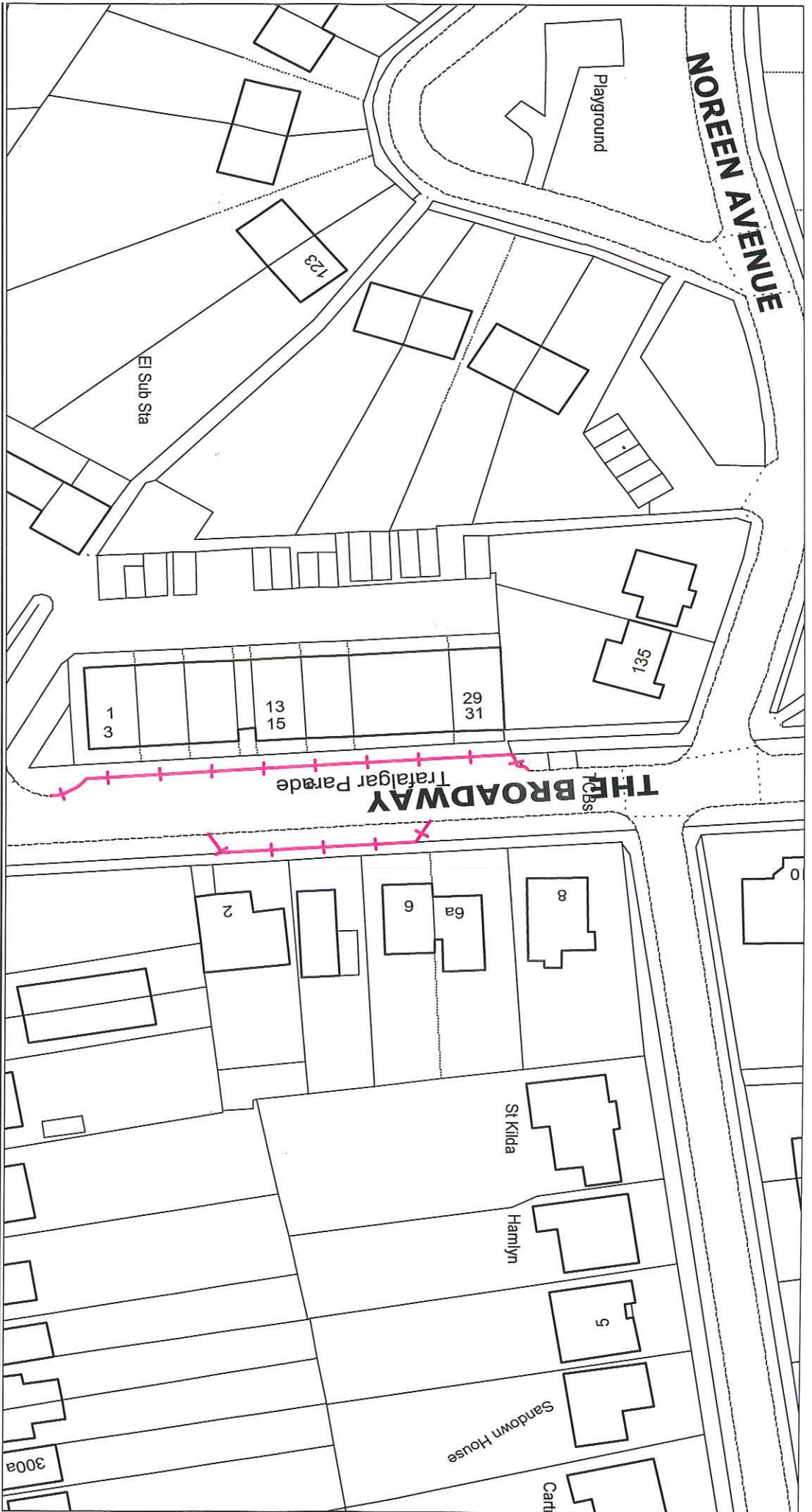
**Kent County Council**  
  
 Kent County Council  
 Ashford Highway Dept  
 Herwood Industrial Estate  
 Ashford TN24 8AD  
 Tel: 01843 247 800

Drawing title	Drawing status	Scale	Do not scale	Rev
Westfield Gardens, Oak Close Danaway	Proposed yellow lining	1:2 at A4		0

Purpose of revision

This drawing is not to be used in whole or part other than for the intended purpose and project as defined on this drawing. Refer to the contract for full terms and conditions.

**The Broadway, Minster - Proposed Limited Waiting in Lay-bys – 1 hour , no return within 1 hour , Mon-Sat 8am-6pm ANNEX B**



**Key Street, Sittingbourne – Proposed Double Yellow Lines**

**ANNEX B**

